



PATTON TOWNSHIP

NEWSLETTER

Fall 2020

Phone: (814) 234-0271 • E-mail: patton@twp.patton.pa.us • Website: <http://twp.patton.pa.us>

REMINDERS!

Election Day is Tuesday November 3, 2020.

Patton Township Polling Locations (Open 7 AM to 8 PM)

Patton North 1 – Patton Township Municipal Building, 100 Patton Plaza

Patton North 2 – Good Shepard Catholic Church, 867 Gray's Woods Blvd

Patton South 1 – Park Forest Village United Methodist Church, 1833 Park Forest Avenue

Patton South 2 – Oakwood Presbyterian Church, 1865 Waddle Road

Patton South 3 – Park Forest Baptist Church, 3030 Carnegie Drive (One block behind Lowe's)

Additional Election information is available at
www.co.centre.pa.us

For Absentee Ballots, Mail-in Ballots or to Register to Vote go to VOTESPA.COM or call (814) 355-6703



WINTER REGULATIONS

Parking is prohibited on Township Streets after a 2 inch snowfall or when a Snow Emergency is declared. Street parking is permitted after the Snow Emergency has been lifted by the Township, or 48 hours after the snowfall.

Sidewalks must be cleared of snow and ice for the entire width of the walk, within 24 hours of the end of a snowfall. The fine for failing to provide a safe walkway is \$15, when paid within 72 hours of the violation notice. No warnings are issued for this violation.

Residents who will be out-of-town must make arrangements to have their sidewalks cleared.

SCHOOL BUS SAFETY

Every year at the end of August, traffic inevitably seems to get a little bit heavier as those bright yellow school buses start their daily routes. It's easy to get frustrated if you are behind a school bus as it makes a dozen stops to pick up students — especially if you are already running late. But adding a few minutes to your commute should be a small price to pay for the safety of the more than 1.5 million students transported daily in Pennsylvania.

In Pennsylvania, it is illegal to pass a school bus when its red lights are flashing and stop arm is extended. If convicted of breaking this law, you could get a \$250 fine, five points on your driving record, and a 60-day suspension of your license.

As part of the law, motorists are required to stop at least 10 feet away when behind the bus, meeting the bus, or approaching an intersection where a bus is stopped. Motorists following or traveling alongside a school bus must also stop until the red lights have stopped flashing, the stop arm is withdrawn, and all children have reached safety. It's important to note that if physical barriers such as grassy medians, guide rails, or concrete median barriers separate oncoming traffic from the bus, motorists in the opposing lanes may proceed without stopping.

Fill out your 2020 Census online today.



Respond online at

2020CENSUS.GOV

Shape
your future
START HERE>

United States*
**Census
2020**

OFF-CAMPUS STUDENTS:

Please Respond - It's Easy at: 2020CENSUS.GOV

See Video at: https://youtu.be/B4Ee8oL_LxY

PATTON TOWNSHIP

100 Patton Plaza
State College, PA 16803
Phone: (814) 234-0271
Fax: (814) 238-7790
E-mail: patton@twp.patton.pa.us
Website: <http://twp.patton.pa.us>

BOARD OF SUPERVISORS

Betsy Whitman, Chair
Dan Treviño, Vice Chair
Elliot Abrams
Pamela Robb
Anita Thies

ADMINISTRATION

Doug Erickson, Township Manager
Stephen Casson, Director of Public Works
Tyler Jolley, Chief of Police
Larry Pegher, Director of Finance & Administration
Ken Soder, Zoning Officer

NEWS FROM THE TAX OFFICE

Weekend and Other Short-term Rental Accommodations in Patton Township

Property owners are reminded that they are required to remit Hotel Occupancy tax on short term rentals. The State rate is 6% and the County rate is 2.5%.

Centre County Treasurer's Office is responsible for the collection of the tax. For more information, please contact Richard Fornicola, Centre County Treasurer, in person at the Willowbank County Office Building, Bellefonte, PA, by phone (814)355-6810 or by email rafornic@centrecountypa.gov.

Real Estate Tax Collection

There are three Real Estate bills per year. County and Township bills are delivered by March 1, and the School District bills are delivered sometime after July 1. There are discount, face and penalty periods for all bills. Please see bill for due dates. Owners of new homes will receive a supplemental tax bill for partial year occupancy of their home.

Taxes Paid from Escrow: Not all lending institutions request tax bills from our Tax Office. If there is no notation on your bill, please forward your bill to your lender with a note requesting that they submit a letter in writing to the Tax Office for the next billing cycle. Supplemental bills might not be paid through escrow. Please contact your mortgage company for payment information.

Earned Income Tax Returns

For the 2012 tax year and beyond, Centre Tax Agency is responsible for collecting and processing earned income tax payments and returns. The Centre Tax Agency (CTA), also known as the State College Borough, was established as a result of Act 32 of 2008. The CTA is located in the Finance Department of the State College Borough Municipal Building, 243 S Allen St, State College, PA.

For questions relating to tax years prior to 2012, contact the Patton Township Tax Office at 814-234-6617.

Local Services Tax

This is a \$52.00 per year tax levied at \$1 per week on people working in the Township. A low income exemption is available for individuals earning less than \$12,000 annually. Individuals who work for more than one employer and have had the tax deducted more than once may claim a refund.

For more information, please contact the collector, State College Borough, at 814-234-7120.

COVID-19 EMERGENCY ORDINANCE FOR FACE COVERINGS AND GATHERING LIMITS

Mask Requirements – In addition to state mandates for wearing masks (in retail businesses, in workplaces where employees cannot socially distance, etc.) this local ordinance requires masks in these situations (unless covered by an exception):

- In government buildings
- On busses and while in cabs and rideshare vehicles
- Anytime you cannot socially distance yourself from others who are not part of your household (i.e. stay 6 feet apart)

Mask Exceptions are included for

- persons with health or disability issues
- persons eating at restaurants
- persons engaging in organized group sports activities following a COVID safety plan

Masks are NOT REQUIRED for

- Persons who are outdoors and maintaining social distance from others who are not part of your household
- Persons in their homes or private vehicles

Gatherings – Size Limits

- At any residence (house, townhome or apartment) **No more than 25 people total** - this includes the common areas of multi-family complexes.
- At Township parks – **no more than 50 people total per gathering** (masks should be worn if you cannot socially distance yourself from others who are not part of your household)
- At other publicly-owned spaces - **no more than 50 people total per gathering** (masks should be worn if you cannot socially distance yourself from others who are not part of your household)
- Gatherings in other private commercial property shall be restricted by the limitations established by the Pennsylvania Department of Health.

Gatherings – Exceptions

- Numerous exceptions are provided for special events, schools, protests, commercial events, etc. Please check the [ordinance](#) on our website.
- Events under the purview of the Centre Region Parks and Recreation Agency have been exempted because they are operating under COVID-19 Safety Plans based on CDC and PA DOH guidance.

Fines - \$100 per violation

Patton Township Police Department Mission Statement:

The Patton Township Police Department, in partnership with our community, provides impartial, ethical, and professional law enforcement service and protection. We strive to maintain the trust and confidence of our citizens while working to improve the quality of life.

Contact Information for the Patton Township Police Department:

911-Emergencies

1-800-479-0050 - Non-emergencies

814-234-0271 - Township Office (M-F 8:30 AM till 4.30 PM)

police@twp.patton.pa.us - Email



On August 14, 2020, the Centre County District Attorney's Office presented the 2019 Law Enforcement Officer of the Year award to Officer Brian Shaffer. The award is given annually to a Centre County law enforcement officer in recognition of exceptional service to law enforcement and the citizens of Centre County above and beyond the call of duty.

WINTER MAINTENANCE

The Public Works Department would like to remind residents of the guidelines for winter weather.

1. Residents are advised to wait as long as possible to shovel or clear out the end of the driveway. Also, deposit the snow to the right of your driveway as you face the street. By doing this, when the plow returns, it will carry the snow away from the driveway. Snow placed on the left side will probably end up right back in the driveway the next time the plow makes a pass.
2. High volume streets and bus routes are plowed and salted first (Valley Vista Drive, Waddle Road, Vairo Boulevard, Toftrees Avenue, Cricklewood Drive.) Through-streets are cleared next, and cul-de-sacs and other dead end streets are cleared last. Not all the streets or roads in Patton Township are public. Private drives are maintained by owners, homeowners associations, or the developer. PennDOT is responsible for plowing and salting the following roadways: North Atherton Street, Mount Nittany Expressway, Buffalo Run Road, West Buffalo Run Road, Stevenson Road, Bernel Road, North Fillmore Road, Fox Hill Road, and Fox Hollow Road.
3. Township standards are to clear the road from edge-to-edge or curb-to-curb to provide safe traveling conditions and provide storage space for subsequent snow falls. To do this requires multiple passes with the plow to move the snow from the centerline to the edge of the road. This means until the street is completely clear, the plow will come by again. The plow is not lifted at driveways because this would leave snow on the street creating a hazard for drivers.

Parks & Recreation

RECREATION IN PATTON TOWNSHIP

In June of this year, the Recreation Advisory Committee (RAC) mailed a parks survey to 2400 randomly selected households in the Township. The purpose of this survey was to find out if and how they use recreation facilities and what they would like to see in the future.

The good news is that our residents are very active, through all age groups! Preliminary review of the data shows that 72% of residents are using some kind of recreational offering once a week or more and 66% of residents are using the bicycle/pedestrian path system. 70% of residents would like to see more walking paths in parks in the future and 64% of residents would like to see more bicycle/pedestrian paths to connect parks to each other and to neighborhoods. Currently, 59% of residents get to the parks either by foot or bicycle.

The data will be further reviewed and analyzed and recommendations for priority projects will be made. This will become part of a planning document that will help guide recreational development in the township over the next 5 and 10 year periods.

To find out more about all the parks in Patton Township and the Centre Region please visit: <https://www.cpr.org/find-your-park>

Interested residents should explore the shared use path and bicycle system in by visiting: <https://www.crcog.net/bikes>

DOGS IN PARKS

Also, as a reminder, pets must be kept on a leash that is 6 foot in length or shorter and kept under owner control at all times. Please be respectful of all park users and keep your pets on-leash. This is important for the enjoyment of our facilities by all and it is the law. Thank you!

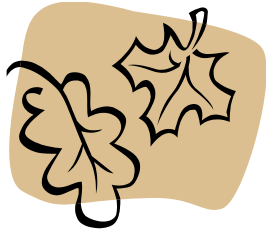


Restoring Rain's Reputation: What everyone can do to help

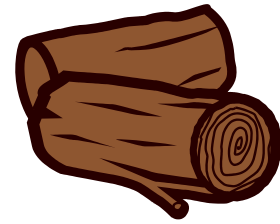
- 💧 Rain by nature is important for replenishing our drinking water supplies, recreation, and healthy wildlife habitats. It only becomes a problem when pollutants from our activities like car maintenance, lawn care, and dog walking are left on the ground for rain to wash away. Here are some of the most important ways to prevent storm water pollution:
- 💧 Properly dispose of hazardous substances such as used oil, cleaning supplies and paint. Never pour them down any part of the storm sewer system and report anyone who does.
- 💧 Use pesticides, fertilizers, and herbicides properly and efficiently to prevent excess runoff. Talk to your landscape professional about proper application if you do not apply them yourself.
- 💧 Look for signs of soil and other pollutants, such as debris and chemicals, leaving construction sites in storm water runoff or tracked onto roads by construction vehicles. Report poorly managed construction sites that could impact storm water runoff to your community.
- 💧 Install innovative stormwater practices on residential property, such as rain barrels or rain gardens that capture storm water and keep it on site instead of letting it drain away into the storm sewer system.
- 💧 Report any discharges from storm water outfalls during times of dry weather - a sign that there could be a problem with the storm sewer system.
- 💧 Use a car wash, rinseless car wash products, or wash your car without detergents - New MS4 regulations require it.
- 💧 Pick up after pets and dispose of their waste properly. No matter where pets make a mess, in the back yard or the park, storm water runoff can carry pet waste from the land to the storm sewer system to a stream.
- 💧 Store materials that could pollute storm water indoors and use containers for outdoor storage that do not rust or leak to eliminate exposure of materials to storm water.

For more information or to report an issue please contact The Patton Township Public Works Department @ 814-234-0271 or publicworks@twp.patton.pa.us

Additional Stormwater Information can be found @ ms4partners.org



Patton Township 2020 Leaf & Brush Collection Schedule & Guidelines



Patton Township collects leaves and brush that are placed along the roadside throughout the year. The Township has two continuous collection efforts in the Spring and Fall when most leaves need to be collected. During the remaining months of the year the Township will collect leaves and brush in one pass through the entire Township during the first week/first Monday of each Month. The details of the leaf and brush collection efforts are indicated below. Residents who live on rural routes of the Township are required to contact the Public Works Department, (814) 234-0271, if you have leaves or brush for collection. You are located on a rural route if you live north of Gray's Woods Boulevard and beyond the intersection of Cricklewood Drive and Fox Hollow Road. The collection route begins in Park Forest and from there it goes to Woodycrest, then Toftrees, and finally to the rural routes if needed to finish. The Township collection is performed by two or three crews simultaneously. They collect large piles of brush ahead of leaves followed by smaller piles of brush that are chipped at the curbside. If the crews do not make it through the Township that day they will pick up where they left off and continue.

Spring & Fall Collection

Fall Collection: September 8 – November 28 (12 weeks)

Spring 2021: March 1 – April 30

This collection effort will be continuous (cycling through the Township over and over) as long as there are leaves and brush to collect.

Normal Monthly Collection (first week/Monday of each month)

January 4, February 1, May 3, June 7, July 5, August 2, December 6

Leaf and brush collection will be done with only one trip through the Township. New piles that are placed out after the Crews have been through your neighborhood will not be collected until the next monthly collection. Please be patient it typically takes two to four days to complete collection through the entire Township in one pass, depending upon amount to be collected.

Resident Guidelines

1. Leaves and/or brush shall be placed curbside prior to 7 AM. Place leaves and brush within five (5) feet of the edge of the road. Do not place leaves or brush on the roadway (§149-16 of the Code of Patton Township).
2. Pile all cut ends of brush in the same direction towards the street.
3. Leaves and brush must be in separate piles. Ornamental grass will be collected and must be separated from leaves and brush.
4. Please do not park vehicles in front of the piles. Leaves and brush cannot and will not be collected if a car is parked in front of a pile.
5. Limbs larger than 8-inches in diameter, stumps, logs, old firewood, and root balls cannot be processed by the Township's equipment and will not be collected. Please make other arrangements for the disposal of these items.
6. A maximum of four (4) truckloads of un-chipped limbs and brush will be collected from a single property. **(4 truckloads of un-chipped brush = 1 load of chipped brush)**

****If piles are not in compliance with the Township's guidelines, a door hanger will be placed indicating what was found by the road crew.**

IMPORTANT DATES

- Sept. 7** Labor Day – Municipal Offices CLOSED
- Sept. 9** Board of Supervisors Meeting - 5:00PM
- Sept. 14** Planning Commission Meeting - 4:30PM
- Sept. 15** Recreation Advisory Committee – Parks Tour - 4:00PM
- Sept. 21** Planning Commission Work Session
- Sept. 23** Board of Supervisors Meeting - 5:00PM
- Oct. 5** Planning Commission Meeting - 4:30PM
- Oct. 12-16** Bulk Waste Collection
- Oct. 12** Planning Commission Work Session
- Oct. 14** Board of Supervisors Meeting
- Oct. 20** Recreation Advisory Committee - 7:00PM
- Oct. 28** Board of Supervisors Meeting
- Oct. 31** Trick or Treat - 6:00PM to 8:00PM
- Nov. 2** Planning Commission Meeting - 4:30PM
- Nov. 3** General Election
- Nov. 4** Board of Supervisors Meeting
- Nov. 9** Planning Commission Work Session
-
- Nov. 11** Board of Supervisors Budget Meeting
- Nov. 17** Recreation Advisory Committee - 7:00PM
- Nov. 18** Board of Supervisors Meeting
- Nov. 26** Thanksgiving - Municipal Offices CLOSED
- Nov. 27** Black Friday - Municipal Offices CLOSED
- Dec. 7** Planning Commission Meeting - 4:30PM
- Dec. 9** Board of Supervisors Meeting
- Dec. 14** Planning Commission Work Session
- Dec. 15** Recreation Advisory Committee - 7:00PM
- Dec. 25** Christmas Observance – Municipal Offices CLOSED
- Jan. 1** New Years Observance – Municipal Offices CLOSED
- Jan. 4** Board of Supervisors Meeting (Reorganizational) - 4:00PM
- Jan. 11** Planning Commission Meeting (Reorganizational)
- Jan. 18** Martin Luther King Day – Municipal Offices CLOSED
- Feb. 15** Presidents Day – Municipal Offices CLOSED

****Please verify meeting times on our website
or by calling the office.***

PATTON TOWNSHIP
100 Patton Plaza
State College, PA 16803

PRSRT STD
US POSTAGE
PAID
State College PA
Permit No. 21

Please Help Improve Our Communications To You!

Complete a Short Survey at
<https://www.surveymonkey.com/r/2020NWSLTR>
Or Find Link on our Website

PATTON TOWNSHIP PUBLIC WORKS E-MAIL SERVICE LIST

*The Patton Township Public Works Department provides
updates and information about activities in Patton Township.
Sign up TODAY!!*

Please forward your name and e-mail address to

publicworks@twp.patton.pa.us

Prescription Drug Take-Back Program

Patton Township participates in the Pennsylvania Prescription Drug Take-Back Program. A prescription drug drop-off box is located in the municipal building lobby. Please visit the Patton Township Website (twp.patton.pa.us) for more information.