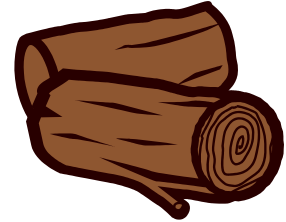


Patton Township 2018 Leaf & Brush Collection Schedule & Guidelines



Once-A-Month Collection (First Monday of each Month)

January 2 (Tuesday due to New Year's)	July 2
February 5	August 6
March 5	September 4 (Tuesday due to Labor Day)
April 2	October 1
May 7	November 5
June 4	December 3

During the Monthly Collection, the Public Works Crew will collect leaves and brush on the first Monday of each month. **ALL** piles from residents must be placed out by the curb, ***NOT ON THE ROAD***, by 7 AM on that Monday. The Public Works Crew will make **ONE** trip through your area. Rural residents are asked to contact the Public Works Department to notify us that you have piles for collection. **New piles that are placed out after the Crew has been through your neighborhood will not be collected until the next monthly collection.**

NOTE: It takes approximately three to four days to complete collection for the entire Township. **Crews begin in Park Forest then go to Woodycrest, Toftrees, and complete on rural routes.** Patton Township asks for your patience during the collection. The brush crews are sent out first followed by the leaf vacuums to complete the collection.

Spring & Fall Collection

Spring Collection	March 12 through May 5
Fall Collection	September 10 through November 30

During the Spring and Fall Collections, the Public Works Crew will collect leaves and brush. **Crews begin in Park Forest then go to Woodycrest, Toftrees, and complete on rural routes.** The Crew can make a complete collection of the Township in approximately one week. The Crew will continue this pace until the end of the collection period. Again, rural residents are asked to contact the Public Works Department if you have piles for collection.

GUIDELINES FOR LEAF AND BRUSH COLLECTION

1. Leaves and/or brush are to be placed curbside prior to 7 AM
2. Place leaves and brush within five (5) feet of the edge of the road. **DO NOT PLACE LEAVES OR BRUSH ON THE ROADWAY!**
3. **PILE ALL CUT ENDS OF BRUSH IN THE SAME DIRECTION TOWARDS THE STREET.**
4. **LEAVES AND BRUSH NEED TO BE IN SEPARATE PILES.**
5. Ornamental grass will be collected and must be a separate pile.
6. Limbs larger than 8-inches in diameter (stumps, logs, old firewood) cannot be chipped by the Township's equipment. Please make other arrangements for the disposal of these items.
7. A maximum of four (4) truckloads of un-chipped limbs and brush will be collected from a single property. (4 truckloads of un-chipped brush = 1 load of chipped brush)
8. **PLEASE DO NOT PARK VEHICLES IN FRONT OF PILES.**