

LIGHTING FIXTURE SCHEDULE							
TAG	DESCRIPTION	MANUFACTURER	MODEL NUMBER	MOUNTING	LAMP #	LAMP QTY.	NOTES
D	EXISTING 2'X4' PARABOLIC TROFFER (REPLACE LAMPS WITH LED)	EXISTING	EXISTING	SURFACE	18W LED T8	4	REPLACE EXISTING 32W T8 TUBES WITH NEW 18W (DIMMABLE) LED REPLACEMENT TUBES (THINKFLUX LED UNIVERSAL FLUORESCENT REPLACEMENT TUBE OR EQUAL)
K	8" LED RETROFIT DOWNLIGHT	MAXILUME	HHJ8-LED 3000L-DIM10 120 WD 35K 90+ HH8-8501 WT-WH	RECESSED	40W LED	1	REPLACES EXISTING FIXTURE
M	8" LED RETROFIT DOWNLIGHT (EMERGENCY)	MAXILUME	HHJ8-LED 2000L-DIM10 120 WD 35K 90+ HH8-8501 WT-WH	RECESSED	40W LED	1	REPLACES EXISTING EMERGENCY FIXTURE
S	8" LED RETROFIT DOWNLIGHT	MAXILUME	HHJ8-LED 3000L-DIM10 120 WD 35K 90+ HH8-8501 WT-WH	RECESSED	40W LED	1	REPLACES EXISTING FIXTURE
T	6" LED RETROFIT WALL WASH	MAXILUME	HHJ6-LED 3000L-DIM10 120 MD 35K 90+ HH6-6507 WT-WH	RECESSED	40W LED	1	REPLACES EXISTING FIXTURE
U	EXISTING TRACK LIGHTS (REPLACE LAMPS WITH LED)	EXISTING	EXISTING	TRACK	19W LED	5	REPLACE EXISTING 150W PAR38 LAMPS WITH NEW 19W LED PAR38 (DIMMABLE) LAMPS (LIGHTING SCIENCE MODEL FG-02438 OR EQUAL)

NOTES:
 -ALL LIGHTING FIXTURES TO BE 120 VOLTS AND DIMMABLE.
 -ALL LIGHTING FIXTURES TO BE FURNISHED W/ INSTANT START BALLASTS.

GENERAL ELECTRICAL NOTES

- ALL ELECTRICAL WORK SHALL BE IN ACCORDANCE WITH THE NATIONAL ELECTRICAL CODE (NEC) AND ALL APPLICABLE STATE OR LOCAL CODES.
- EXISTING CONDITIONS ARE SHOWN BY LIGHT LINE WORK; NEW CONSTRUCTION IS SHOWN BY BOLD LINE WORK. THESE DRAWINGS ARE DIAGRAMMATIC IN NATURE AND DO NOT NECESSARILY SHOW ALL OFFSETS AND FITTINGS THAT WILL BE REQUIRED. COORDINATE CAREFULLY WITH EXISTING UTILITIES, EQUIPMENT AND STRUCTURE.
- CONTRACTOR IS RESPONSIBLE FOR VERIFICATION OF ALL FIELD CONDITIONS PRIOR TO PLACING BID, PURCHASING EQUIPMENT OR MATERIALS AND COMMENCEMENT OF ANY WORK. NOTIFY ENGINEER OF ANY DISCREPANCIES FOR RESOLUTION.
- REPORT ANY OBSERVED CODE VIOLATIONS OF EXISTING SYSTEMS TO ENGINEER.
- INSTALL ALL EQUIPMENT PER MANUFACTURERS INSTRUCTIONS.
- SLEEVE OR CORE-DRILL FLOOR SLABS, WALLS, ETC. AS REQUIRED FOR CONDUIT AND PROVIDE FIRE-STOPPING AT OPENING AROUND CONDUIT WHERE REQUIRED. VERIFY LOCATION OF STRUCTURAL BEAMS, JOIST, ETC. BEFORE DRILLING. COORDINATE ALL SAWCUT AND FLOOR PENETRATIONS LOCATIONS WITH THE GENERAL CONTRACTOR.
- WHERE REQUIRED, CONTRACTOR SHALL PROVIDE COMPLETE FIRE SEALING OF ALL CONDUIT PENETRATIONS THROUGH FLOOR, WALLS AND CEILINGS. THE FIRE SEALING METHODS AND MATERIALS SHALL BE UL CLASSIFIED. USE WATER BASED MORTAR FIRE SEAL MATERIALS FOR PENETRATIONS THROUGH CONCRETE FLOORS AND MASONRY WALLS. FIRE SEALS SHALL BE AIRTIGHT, MOISTURE AND HUMIDITY RESISTANT.
- MAINTAIN A MINIMUM OF 6" CLEARANCE TO THE UNDERSIDE OF CONDUITS, SUSPENDED EQUIPMENT, ETC. THROUGH-OUT ACCESS ROUTES IN MECHANICAL/ELECTRICAL EQUIPMENT ROOMS.
- REFER TO ARCHITECTURAL ELEVATIONS AND REFLECTED CEILING PLANS, WHERE SUCH ARE SHOWN, FOR EXACT LOCATION OF ALL WALL AND CEILING MOUNTED ELECTRICAL WORK.
- WHERE 2 SWITCHES ARE SHOWN CONTROLLING ONE LIGHT FIXTURE, CONNECT THE SWITCH CLOSEST TO DOOR WAY TO THE OUTER LAMPS AND THE OTHER SWITCH TO THE INNER LAMP(S).
- COORDINATE FINAL LIGHTING FIXTURE LOCATIONS IN MECHANICAL/ELECTRICAL SPACES WITH EQUIPMENT, DUCTWORK, PIPING, CONDUITS, ETC. FOR BEST POSSIBLE UNIFORMITY.
- ALL WIRING IN FINISHED AREAS SHALL BE CONCEALED IN WALLS, ABOVE THE CEILING, BELOW THE FLOOR OR CONTAINED IN SURFACE RACEWAY SYSTEMS.
- ALL EXPOSED BRANCH CIRCUITS (ABOVE LIGHTING LEVEL) SHALL BE 2-#12+1-#12G, 3/4" CONDUIT, UNLESS OTHERWISE NOTED.
- ALL WIRING SHALL BE COPPER TYPE THHN OR THWN.
- TYPE MC (METAL CLAD) CABLE IS ALLOWED TO FEED RECEPTACLES IN CONCEALED AREAS AND ABOVE DROP CEILINGS FOR LIGHTING FIXTURE WIRING WHIPS. WHIP LENGTH TO LIGHTING FIXTURES SHALL NOT EXCEED 6 FEET. JUNCTION BOXES FOR RECEPTACLE SHALL BE SET ON WALL ABOVE SUSPENDED CEILING AND EXPOSED LENGTH OF MC CABLE ABOVE SUSPENDED CEILING SHALL NOT EXCEED 3'. MC CABLE SHALL NOT BE PERMITTED TO RUN FROM/TO THE PANELBOARD.

PRODUCTS/MATERIALS

- SAFETY SWITCH
 -SQUARE D GENERAL DUTY
- WIRE MOLD
 -5400 SERIES SURFACE NON-METALLIC RACEWAY
- SECURITY SMOKE DETECTORS
 -PROVIDED AND INSTALLED BY OTHERS
- SWITCHES
 -LEVITON #CSB1-20-I
 -LEVITON #CSB3-20-I
- SWITCH COVER PLATES
 -LEVITON #80701-I (SINGLE GANG)
 -LEVITON #80709-I (DOUBLE GANG)
- RECEPTACLES
 -LEVITON #5362A-I
 -LEVITON #5361-I
- RECEPTACLE COVER PLATES
 -LEVITON #80704-I (SINGLE GANG)
 -LEVITON #80703-I (DOUBLE GANG)
- WEATHERPROOF DUPLEX RECEPTACLE COVER PLATES
 -LEVITON #4926
- FLOOR RECEPTACLES
 -HUBBELL #B2529
 -HUBBELL #S3725 (COVER)
- TELE/DATA COVER PLATE
 -LEVITON #41080-2IP
- HANGER RODS
 -THREADED HIGH TENSILE STRENGTH GALVANIZED CARBON STEEL WITH FREE RUNNING THREADS.
- CONDUIT CLAMPS FOR TRAPEZE HANGERS
 -GALVANIZED STEEL, NOTCHED TO FIT TRAPEZE WITH SINGLE BOLT TO TIGHTEN.
- CONDUIT
 -UNDERGROUND: PVC SCHEDULE 80
 -INSIDE WALLS: MC CABLE
 -OTHERS: EMT OR AS INDICATED
- CONDUIT CLAMPS
 -GENERAL PURPOSE: ONE HOLE MALLEABLE IRON FOR SURFACE MOUNTED CONDUITS.
- CABLE TIES
 -HIGH STRENGTH NYLON TEMPERATURE RATED TO 185°F, SELF LOCKING.

ELECTRICAL LEGEND

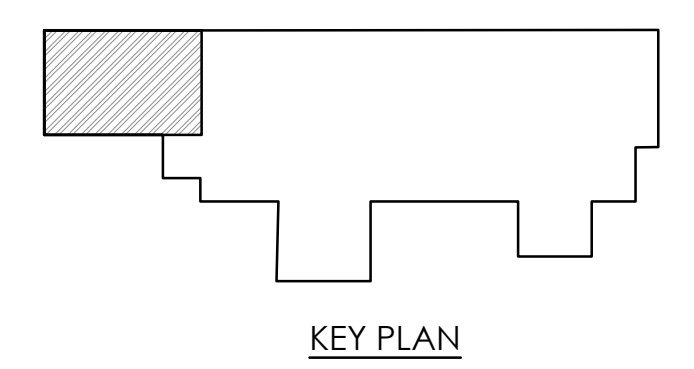
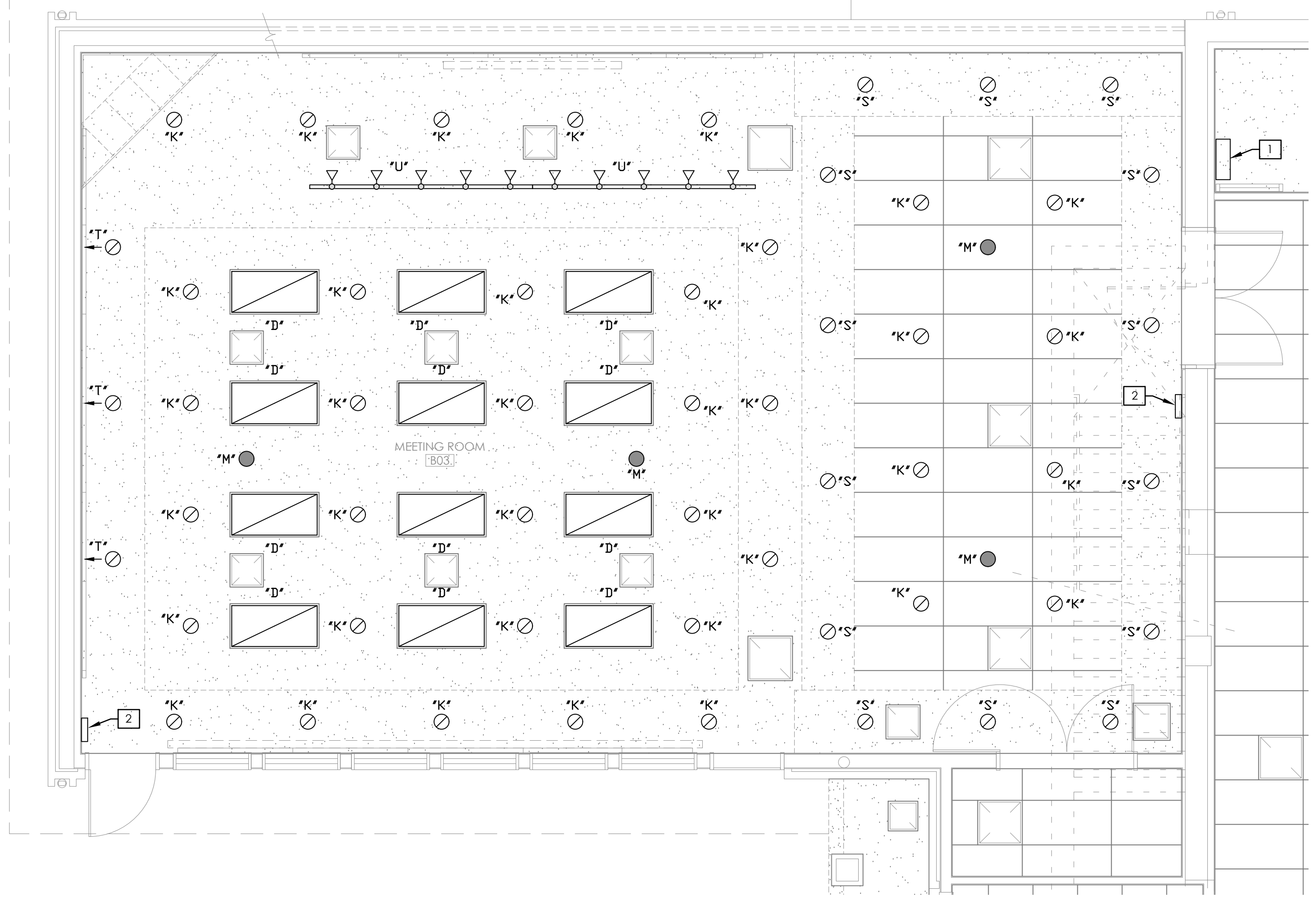
ⓧ	DEMOLITION/KEYED NOTE	ⓧ	LIGHTING FIXTURE TYPES
Ⓢ	WALL TYPE SWITCH:	→	EXIT SIGN
Ⓢ	3=3-WAY	↔	ARROW INDICATES DIRECTION
Ⓢ	4=4-WAY	▭	SHADING INDICATES ILLUMINATED SIDE
Ⓢ	OCC. SENSOR	ⓧ	FIRE ALARM PULL STATION
Ⓢ	MOUNTING HEIGHT	ⓧ	AUDIO/VISUAL FIRE ALARM DEVICE
Ⓢ	JUNCTION BOX	ⓧ	AUDIO FIRE ALARM DEVICE
Ⓢ	GROUND	ⓧ	VISUAL FIRE ALARM DEVICE
Ⓢ	DISCONNECT SWITCH	▽	UNSECURE DATA OUTLET
Ⓢ	HOMERUN TO PANELBOARD	▼	SECURE DATA OUTLET
Ⓢ	MOTOR	ⓧ	TELEVISION CABLE OUTLET
Ⓢ	SINGLE RECEPTACLE	ⓧ	FLUSH MOUNTED PANELBOARD
Ⓢ	DUPLEX RECEPTACLE	ⓧ	SURFACE MOUNTED PANELBOARD
Ⓢ	NEMA RECEPTACLE	ⓧ	WP WATER PROOF
Ⓢ	QUAD RECEPTACLE	ⓧ	UC UNDER COUNTER
Ⓢ	FLOOR RECEPTACLE	ⓧ	AC ABOVE COUNTER
Ⓢ	SPECIAL PURPOSE RECEPTACLE	ⓧ	AFF ABOVE FINISHED FLOOR
Ⓢ	SECURE DATA POLE		
Ⓢ	UNSECURE POWER/DATA POLE		

ELECTRICAL ABBREVIATIONS

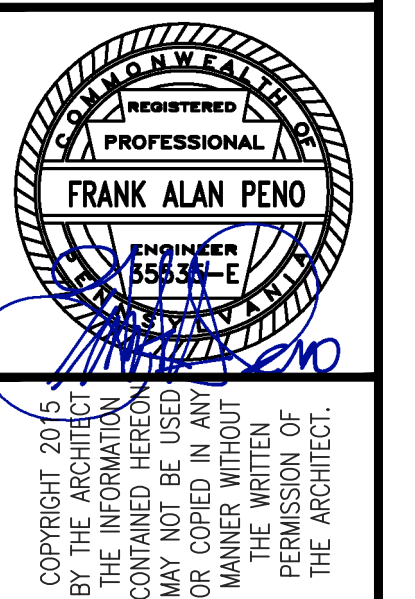
&	AND	ELEC	ELECTRICAL
∅	PHASE	EMERG	EMERGENCY
A	AMPERAGE	ETC	ETCETERAS
A.C.	ABOVE COUNTER	EXH	EXHAUST
A.F.F.	ABOVE FINISHED FLOOR	FIXT(S)	FIXTURE(S)
A.I.C.	AMPS INTERRUPT CAPACITY	FR	FROM
C	CONDUIT	G	GROUND
CO	COMPANY	GFI	GROUND FAULT
CR	CARD READER	I	INTERRUPT
CU	COPPER	kVA	KILO VOLT AMPS
DIST	DISTRIBUTION	kw	KILO WATTS
DN	DOWN	LED	LIGHT EMITTING DIODE
DT	DOUBLE TUBE	LTG	LIGHTING
E.C.	ELECTRICAL CONTRACTOR	MAX	MAXIMUM
EF	EXHAUST FAN	M.C.	MECHANICAL CONTRACTOR
MH	METAL HALIDE	MECH	MECHANICAL CONTRACTOR
MIN	MINIMUM	RT	ROOF TOP
MLO	MAIN LUGS ONLY	RM	ROOM
N	NEUTRAL	SAN	SANITARY
NEMA	NATIONAL ELECTRICAL MANUFACTURERS ASSOCIATION	T	TRANSFORMER
OL	OVERLOAD	TT	TWIN TUBE
PB	PUSH BUTTON SWITCH	TTT	TRIPLE TUBE
P.C.	PLUMBING CONTRACTOR	UH	UNIT HEATER
PL	PILOT LIGHT	UL	UNDERWRITERS LABORATORY
PNL	PANELBOARD	V	VOLTS
(R)	RELOCATED	W	WIRE
RCPT(S)	RECEPTACLE(S)	WP	WEATHERPROOF
REF	REFERENCE	XFMR	TRANSFORMER

KEY NOTES:

- EXISTING DIMMER UNIT. E.G. TO VERIFY ALL NEW FIXTURES AND LAMPS ARE COMPATIBLE WITH EXISTING DIMMING SYSTEM.
- EXISTING DIMMER STATION TO REMAIN.



MEETING ROOM LIGHTING PLAN
 SCALE: 1/4" = 1'-0"



REVISIONS	DATE	NO.	DESCRIPTION

DATE: **AUGUST 25, 2017**
 PROJECT NO: **1727**
 SHEET NAME:

Peno Engineering LLC
 Consulting MEP Engineers
 2746 West College Avenue
 State College, PA 16801
 phone: 814.234.7366
 fax: 814.234.7040
 PBCI No. : E37063
 © 2017 Peno Engineering LLC

MEETING ROOM LIGHTING RETROFIT
 SHEET NO:
E1